



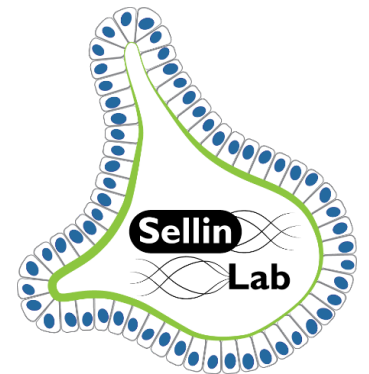
SciLifeLab Data Repository

A User Perspective

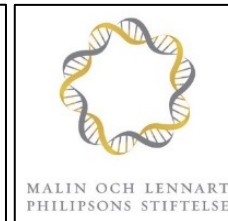
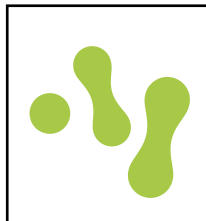
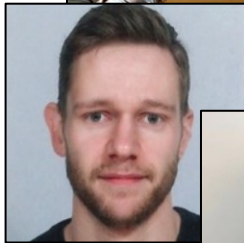
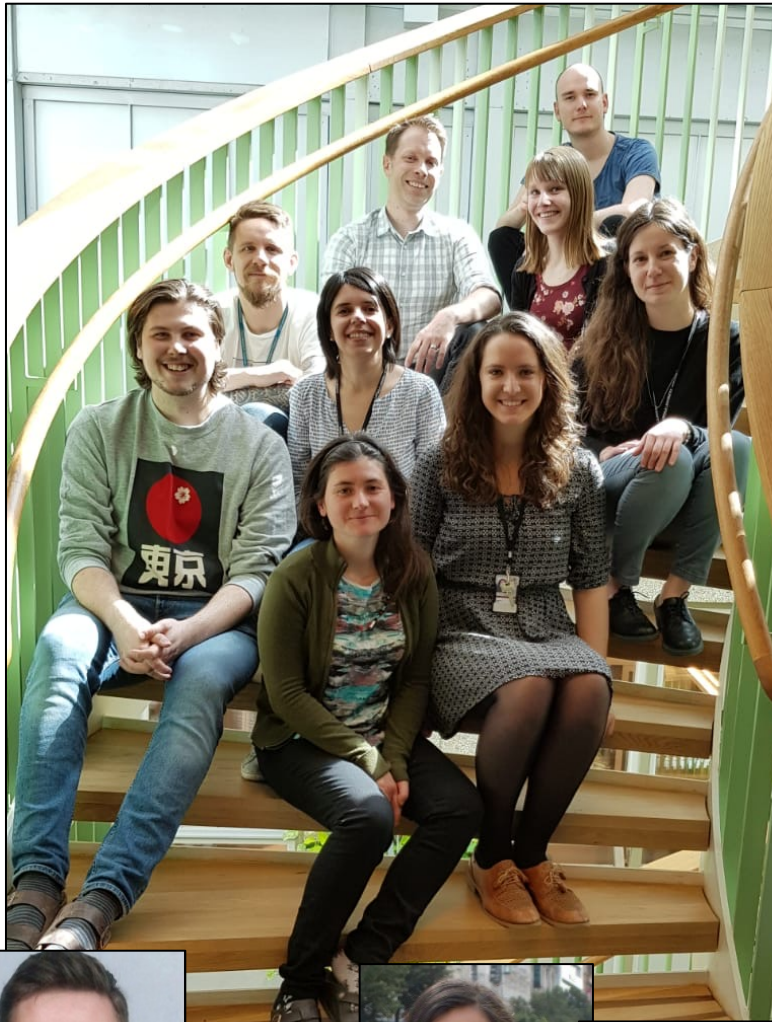
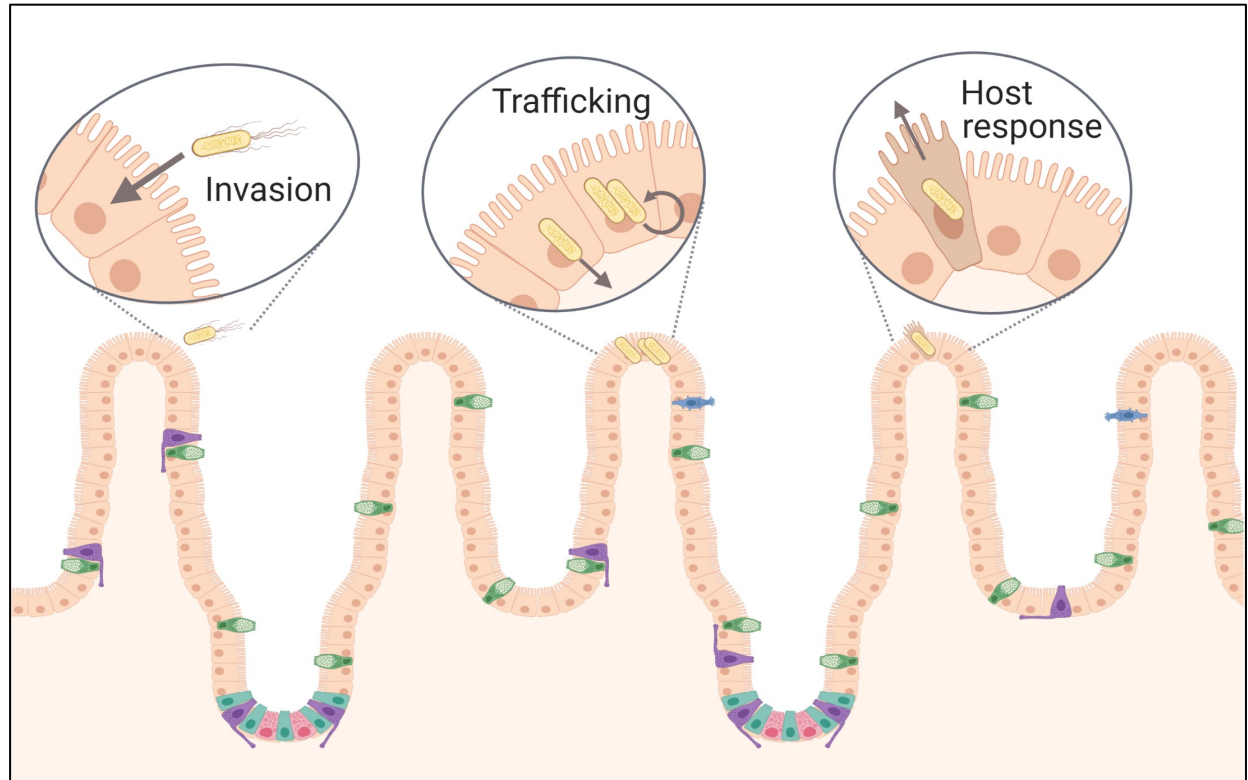
Mikael Sellin

IMBIM/SciLifeLab
Uppsala University
mikael.sellin@imbim.uu.se

Twitter: [@SellinLab](https://twitter.com/SellinLab)

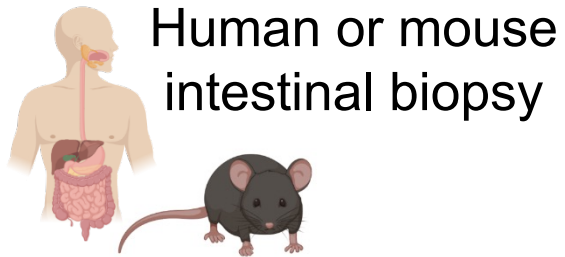


Sellin Lab – Gut Bacterial Infections

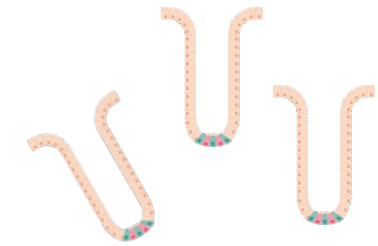


Carl Tryggers Stiftelse
för Vetenskaplig Forskning

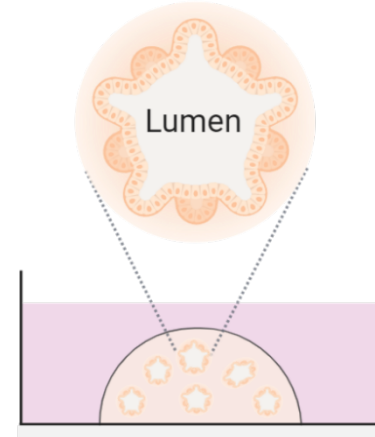
Visualizing Bacterial Infections by Time-Lapse Microscopy



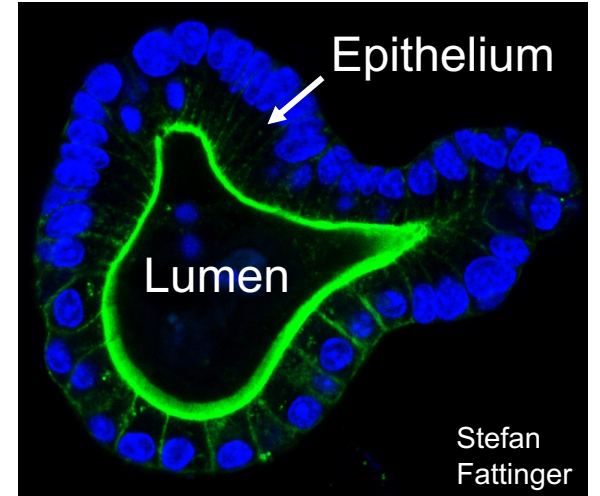
Human or mouse
intestinal biopsy



Isolation of
stem cell-
containing crypts



Embedding in matrix
overlaid w. media



Stefan
Fattinger



Jens Eriksson



Frankenscope



A Map of the *Salmonella* Infection Cycle in “Enteroids”



Petra Geiser et al 2021



RESEARCH ARTICLE
Host-Microbe Biology



Salmonella enterica Serovar Typhimurium Exploits Cycling through Epithelial Cells To Colonize Human and Murine Enteroids

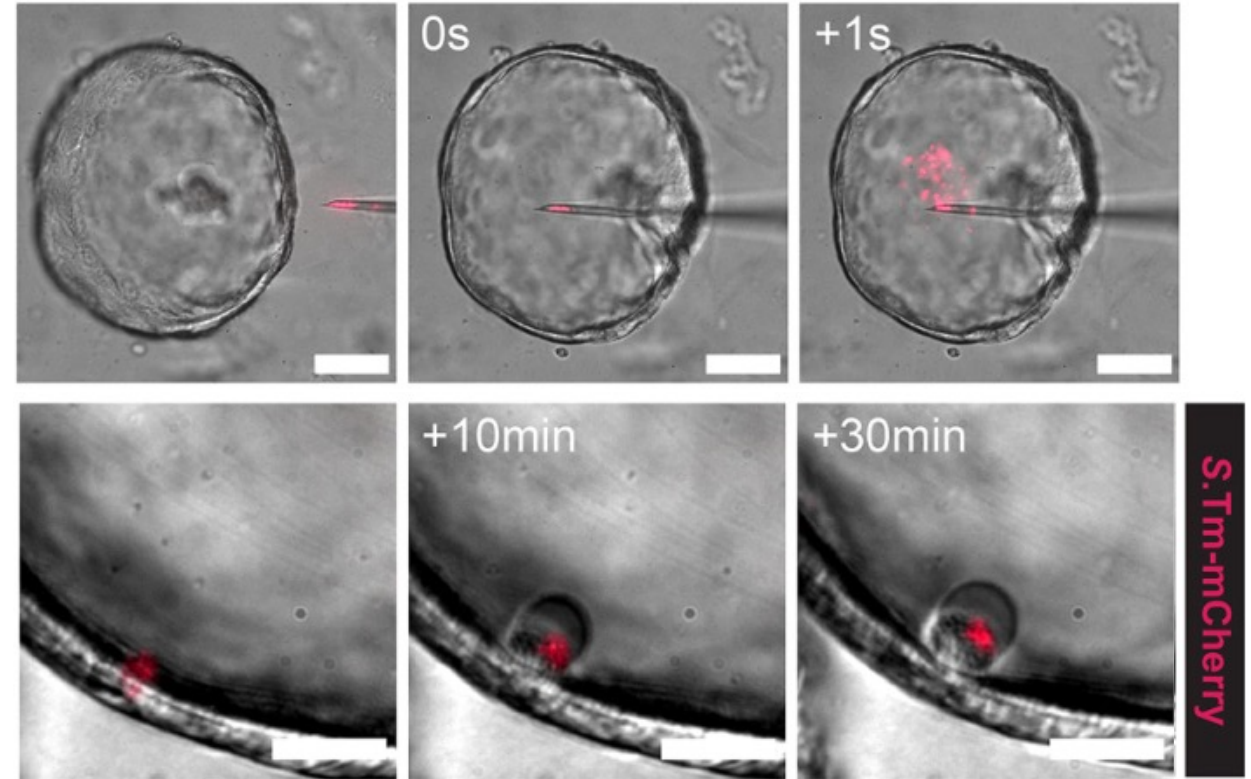
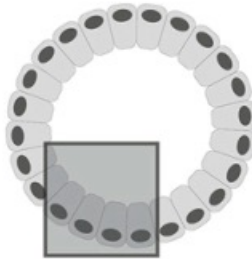
● Petra Geiser,^a ● Maria Letizia Di Martino,^a ● Pilar Samperio Ventayol,^a ● Jens Eriksson,^a ● Eduardo Sima,^b
● Anas Kh. Al-Saffar,^{c*} ● David Ahl,^d ● Mia Phillipson,^d ● Dominic-Luc Webb,^c ● Magnus Sundbom,^b ● Per M. Hellström,^c
● Mikael E. Sellin^a

^aScience for Life Laboratory, Department of Medical Biochemistry and Microbiology, Uppsala University, Uppsala, Sweden

^bDepartment of Surgical Sciences, Uppsala University, Uppsala, Sweden

^cDepartment of Medical Sciences, Gastroenterology and Hepatology Unit, Uppsala University, Uppsala, Sweden

^dDepartment of Medical Cell Biology, Uppsala University, Uppsala, Sweden



Problems:

- Our experiments generate annoyingly large (but informative) movie sets.
- Journals as a rule have a limit for supplementary items.

Solution: → SciLifeLab Data Repository

The Process

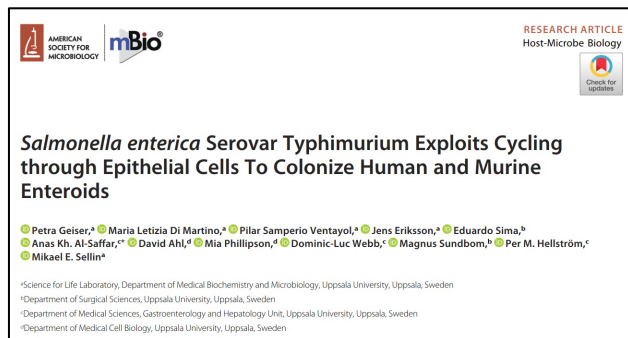


Manuscript preparation

1. Original draft and submission
2. Review
3. Minor revision and resubmission
4. Acceptance and online publication

SciLifeLab Data Repository submission

- Deposition of movie set in repository.
- Booking of a DOI.
- Reviewers given access to supplemental movies by “private link”.
- Additional information added/updated.
- Preparation for public release.
- Embargoed public release of the movie set.



DOI: [10.1128/mBio.02684-20](https://doi.org/10.1128/mBio.02684-20)



←
→
Reciprocal
links



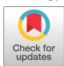
DOI: [10.17044/scilifelab.12998570](https://doi.org/10.17044/scilifelab.12998570)

Evaluation: Did this Procedure Result in Added Value?





RESEARCH ARTICLE
Host-Microbe Biology




***Salmonella enterica* Serovar Typhimurium Exploits Cycling through Epithelial Cells To Colonize Human and Murine Enteroids**

● Petra Geiser,^a ● Maria Letizia Di Martino,^a ● Pilar Samperio Ventayol,^a ● Jens Eriksson,^a ● Eduardo Sima,^b ● Anas Kh. Al-Saffar,^{c*} ● David Ahl,^d ● Mia Phillipson,^d ● Dominic-Luc Webb,^c ● Magnus Sundbom,^b ● Per M. Hellström,^c ● Mikael E. Sellin^a

^aScience for Life Laboratory, Department of Medical Biochemistry and Microbiology, Uppsala University, Uppsala, Sweden
^bDepartment of Surgical Sciences, Uppsala University, Uppsala, Sweden
^cDepartment of Medical Sciences, Gastroenterology and Hepatology Unit, Uppsala University, Uppsala, Sweden
^dDepartment of Medical Cell Biology, Uppsala University, Uppsala, Sweden






Corkscrewing through snot

Jan. 21, 2021

Salmonella colonization of three-dimensional miniature intestinal organs, and identification of a circadian clock in a non-photosynthetic prokaryote.

 Listen 44:45

PODCASTS

HOST-MICROBE BIOLOGY

January 10th, 2021

→Repository embargoed until that date.

“...They have videos posted...that are freely available, so you can actually follow along and witness the science...”

Summary of Our Experiences



- SciLifeLab Data Repository is a convenient and flexible solution, particularly for publishing large data sets that do not fit journal format.
- There is no need to stick to journal constraints for supplemental items anymore.
- Versioning and early booking of a DOI simplifies the organic development of a project towards completion.
- Read the instructions carefully at your first submission.